

## Parent Climate and Culture Survey 2021: District Results

The survey was conducted from March 15 to April 11, 2021.

All parents & guardians were invited to complete a survey for each school attended by their children.

Of the 24,260 survey invitations sent to parents, 5,296 surveys were returned. 5,296/24,260 provides an official response rate of 22%

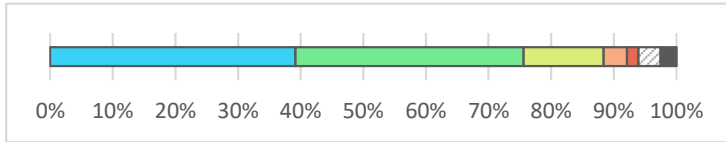
School	School-Specific Responses*	Enrolled Students**	Rate
Elementary Schools	2,591	9,353	28%
Middle Schools	1,073	4,727	23%
High Schools	1,127	5,681	20%
6-12 Magnet Schools	413	1,102	37%
Alternative Schools	75	1,029	7%
<b>Total</b>	<b>6,016</b>	<b>21,892</b>	<b>27%</b>

\* Some parents responded for multiple schools.

\*\* Some students may have multiple parents completing surveys.

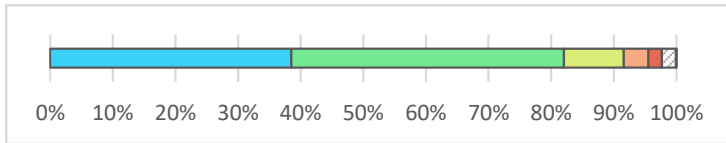
# Parent Climate and Culture Survey 2021: District Results

## I feel welcome in my child's school.



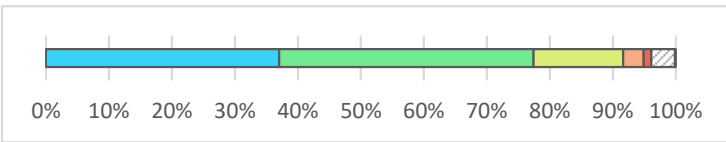
Strongly Agree	39%	2,349
Agree	36%	2,185
Neither Agree nor Disagree	13%	767
Disagree	4%	222
Strongly Disagree	2%	112
Don't Know	3%	209
Not Applicable	3%	153
<b>Total</b>		<b>5,997</b>

## School staff care about my child's success and well-being.



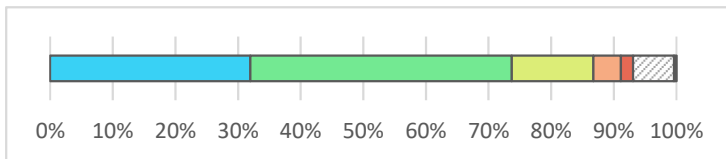
Strongly Agree	39%	2,257
Agree	44%	2,553
Neither Agree nor Disagree	10%	560
Disagree	4%	231
Strongly Disagree	2%	124
Don't Know	2%	132
Not Applicable	0%	5
<b>Total</b>		<b>5,862</b>

## The teachers believe that my child will succeed in school.



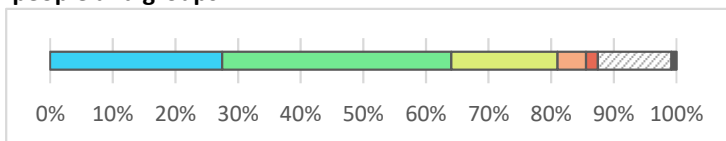
Strongly Agree	37%	2,192
Agree	40%	2,392
Neither Agree nor Disagree	14%	842
Disagree	3%	193
Strongly Disagree	1%	72
Don't Know	4%	223
Not Applicable	0%	8
<b>Total</b>		<b>5,922</b>

## School personnel treat children and families fairly.



Strongly Agree	32%	1,883
Agree	42%	2,460
Neither Agree nor Disagree	13%	767
Disagree	4%	260
Strongly Disagree	2%	113
Don't Know	7%	385
Not Applicable	0%	24
<b>Total</b>		<b>5,892</b>

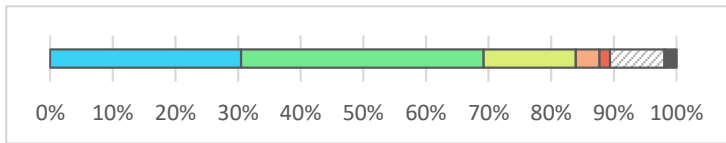
## Members of the school community value differences between people and groups



Strongly Agree	27%	1,625
Agree	37%	2,163
Neither Agree nor Disagree	17%	1,004
Disagree	5%	269
Strongly Disagree	2%	112
Don't Know	12%	693
Not Applicable	1%	48
<b>Total</b>		<b>5,914</b>

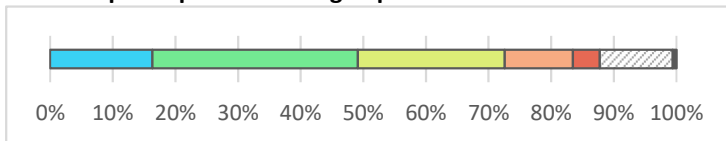
# Parent Climate and Culture Survey 2021: District Results

## My child's school respects different aspects of their identity.



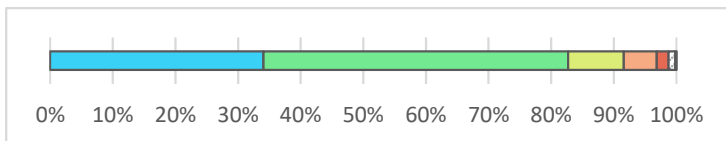
Strongly Agree	30%	1,795
Agree	39%	2,282
Neither Agree nor Disagree	15%	867
Disagree	4%	221
Strongly Disagree	2%	99
Don't Know	9%	513
Not Applicable	2%	113
<b>Total</b>		<b>5,890</b>

## Families participate in making important decisions at this school.



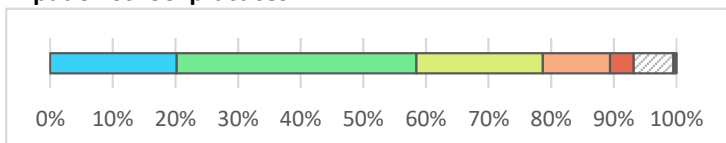
Strongly Agree	16%	938
Agree	33%	1,881
Neither Agree nor Disagree	23%	1,346
Disagree	11%	625
Strongly Disagree	4%	247
Don't Know	12%	667
Not Applicable	1%	34
<b>Total</b>		<b>5,738</b>

## My child's school communicates school practices and updates on a consistent basis.



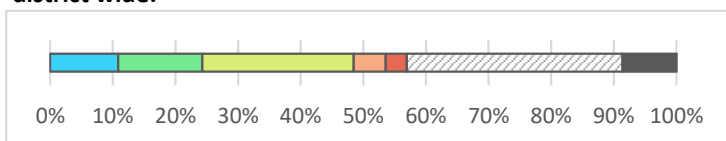
Strongly Agree	34%	1,934
Agree	49%	2,760
Neither Agree nor Disagree	9%	504
Disagree	5%	300
Strongly Disagree	2%	106
Don't Know	1%	63
Not Applicable	0%	9
<b>Total</b>		<b>5,676</b>

## My child's school provides opportunities for parent or guardian input on school practices.



Strongly Agree	20%	1,151
Agree	38%	2,182
Neither Agree nor Disagree	20%	1,148
Disagree	11%	612
Strongly Disagree	4%	216
Don't Know	6%	360
Not Applicable	1%	29
<b>Total</b>		<b>5,698</b>

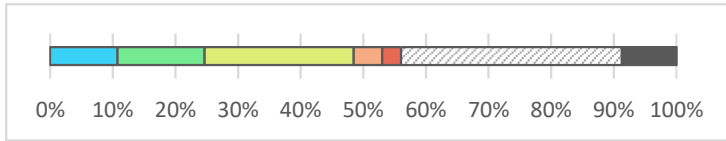
## Parents of color have influence in how decisions are made district wide.



Strongly Agree	11%	614
Agree	13%	761
Neither Agree nor Disagree	24%	1,365
Disagree	5%	291
Strongly Disagree	3%	189
Don't Know	34%	1,950
Not Applicable	9%	486
<b>Total</b>		<b>5,656</b>

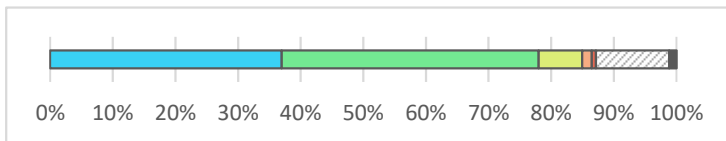
# Parent Climate and Culture Survey 2021: District Results

Parents of color have influence in how decisions are made at the school level.



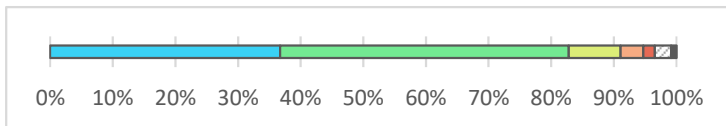
Strongly Agree	11%	607
Agree	14%	786
Neither Agree nor Disagree	24%	1,345
Disagree	5%	255
Strongly Disagree	3%	172
Don't Know	35%	1,992
Not Applicable	9%	491
<b>Total</b>		<b>5,648</b>

The school is clean and well-maintained.



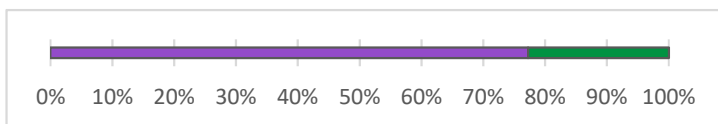
Strongly Agree	37%	2,107
Agree	41%	2,340
Neither Agree nor Disagree	7%	398
Disagree	2%	88
Strongly Disagree	1%	37
Don't Know	12%	667
Not Applicable	1%	66
<b>Total</b>		<b>5,703</b>

If I have an issue or concern I can speak about it with someone on the school staff.



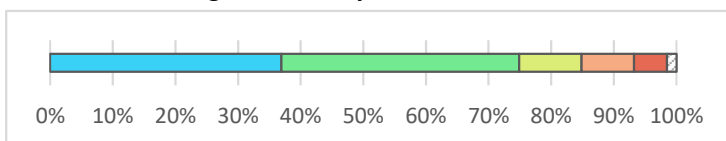
Strongly Agree	37%	2,071
Agree	46%	2,598
Neither Agree nor Disagree	8%	466
Disagree	4%	204
Strongly Disagree	2%	104
Don't Know	3%	147
Not Applicable	1%	47
<b>Total</b>		<b>5,637</b>

Have you had an issue or concern to discuss with a member of the administrative team this year?



No	77%	4,189
Yes	23%	1,234
<b>Total</b>		<b>5,423</b>

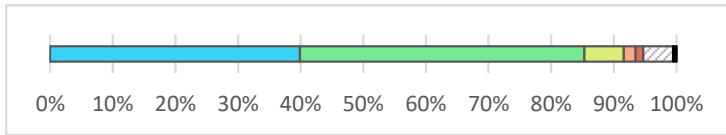
The school administrator(s) responded to my concerns whether or not he or she agreed with my views.



Strongly Agree	37%	441
Agree	38%	454
Neither Agree nor Disagree	10%	119
Disagree	8%	100
Strongly Disagree	5%	63
Don't Know	2%	18
<b>Total</b>		<b>1,195</b>

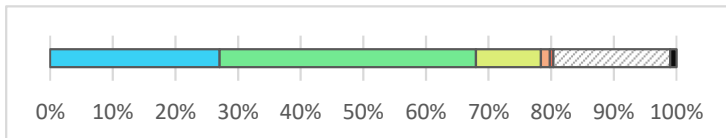
# Parent Climate and Culture Survey 2021: District Results

The school staff do their best to keep students safe.



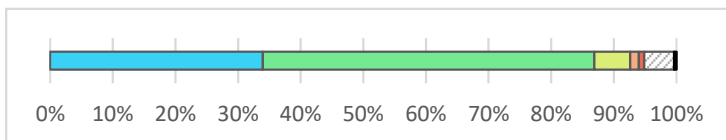
Strongly Agree	40%	2,224
Agree	45%	2,535
Neither Agree nor Disagree	6%	351
Disagree	2%	106
Strongly Disagree	1%	67
Don't Know	5%	266
Not Applicable	1%	30
<b>Total</b>		<b>5,579</b>

Students are trained on the emergency procedures at this school.



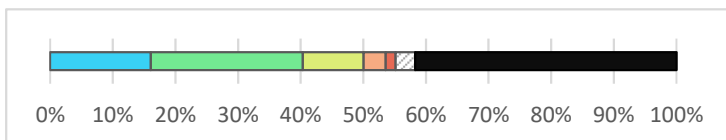
Strongly Agree	27%	1,493
Agree	41%	2,258
Neither Agree nor Disagree	10%	573
Disagree	1%	78
Strongly Disagree	1%	30
Don't Know	19%	1,030
Not Applicable	1%	55
<b>Total</b>		<b>5,517</b>

Students understand the rules and expectations for behavior at school.



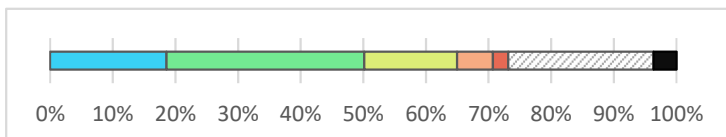
Strongly Agree	34%	1,878
Agree	53%	2,931
Neither Agree nor Disagree	6%	317
Disagree	1%	75
Strongly Disagree	1%	48
Don't Know	5%	263
Not Applicable	0%	22
<b>Total</b>		<b>5,534</b>

My child feels safe riding the bus to and from school.



Strongly Agree	16%	888
Agree	24%	1,337
Neither Agree nor Disagree	10%	538
Disagree	3%	192
Strongly Disagree	2%	90
Don't Know	3%	170
Not Applicable	42%	2,303
<b>Total</b>		<b>5,518</b>

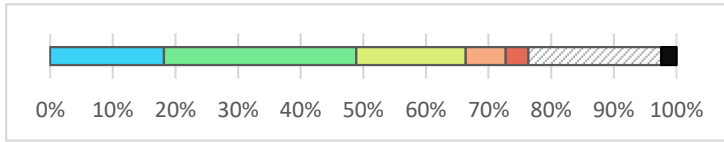
Staff response is fair and consistent when rules are broken or behavior expectations are not met.



Strongly Agree	19%	1,026
Agree	32%	1,746
Neither Agree nor Disagree	15%	819
Disagree	6%	315
Strongly Disagree	2%	135
Don't Know	23%	1,284
Not Applicable	4%	201

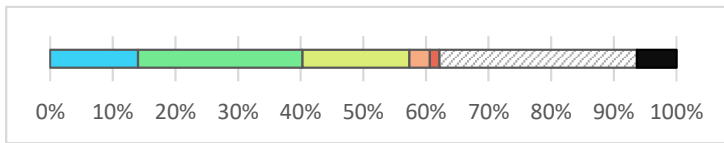
# Parent Climate and Culture Survey 2021: District Results

**I'm satisfied with the way the school staff works to prevent bullying and harassment.**



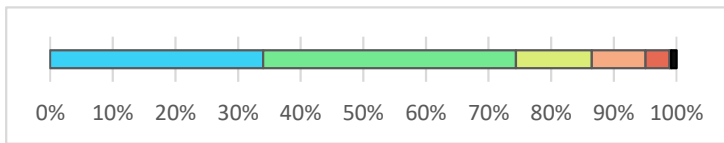
Response	Percentage	Count
Strongly Agree	18%	1,001
Agree	31%	1,689
Neither Agree nor Disagree	17%	963
Disagree	6%	352
Strongly Disagree	4%	199
Don't Know	21%	1,169
Not Applicable	2%	133
<b>Total</b>		<b>5,506</b>

**When students misbehave there are opportunities for them to repair the harm they may have caused the school community.**



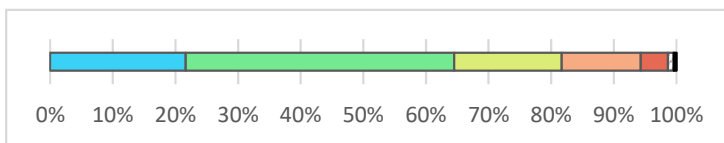
Response	Percentage	Count
Strongly Agree	14%	774
Agree	26%	1,449
Neither Agree nor Disagree	17%	940
Disagree	3%	180
Strongly Disagree	2%	85
Don't Know	32%	1,740
Not Applicable	6%	347
<b>Total</b>		<b>5,515</b>

**My child is excited to go to school.**



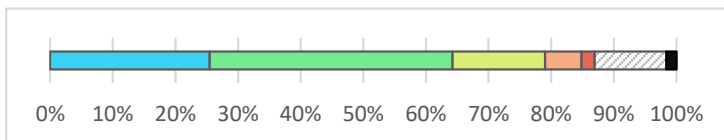
Response	Percentage	Count
Strongly Agree	34%	1,846
Agree	40%	2,192
Neither Agree nor Disagree	12%	658
Disagree	9%	465
Strongly Disagree	4%	209
Don't Know	0%	14
Not Applicable	1%	45
<b>Total</b>		<b>5,429</b>

**Activities and assignments in class keep my child interested in learning.**



Response	Percentage	Count
Strongly Agree	22%	1,164
Agree	43%	2,304
Neither Agree nor Disagree	17%	923
Disagree	13%	678
Strongly Disagree	4%	234
Don't Know	1%	49
Not Applicable	0%	23
<b>Total</b>		<b>5,375</b>

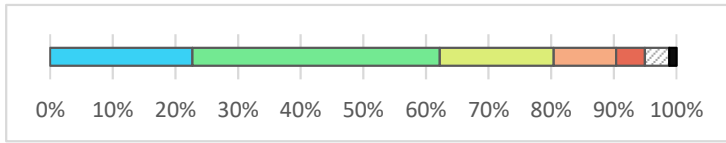
**My child's teachers provide materials and activities that reflect the different cultures identities and experiences of students in the classroom.**



Response	Percentage	Count
Strongly Agree	25%	1,370
Agree	39%	2,088
Neither Agree nor Disagree	15%	795
Disagree	6%	313
Strongly Disagree	2%	114
Don't Know	11%	615
Not Applicable	2%	87
<b>Total</b>		<b>5,375</b>

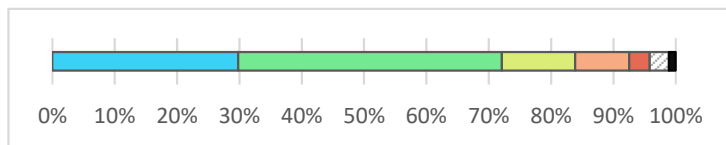
# Parent Climate and Culture Survey 2021: District Results

**I'm satisfied with the guidance my child receives for their future.**



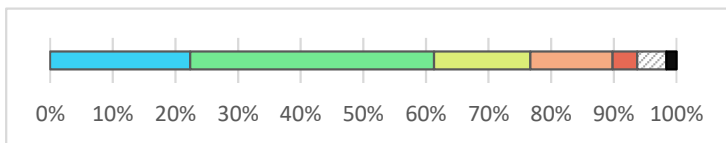
Total		5,382
Strongly Agree	23%	1,219
Agree	39%	2,118
Neither Agree nor Disagree	18%	976
Disagree	10%	533
Strongly Disagree	5%	248
Don't Know	4%	209
Not Applicable	1%	61
Total		5,364

**Teachers provide extra help when my child needs it.**



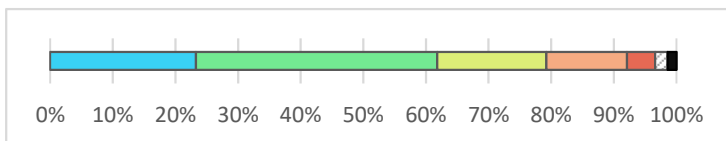
Strongly Agree	30%	1,603
Agree	42%	2,277
Neither Agree nor Disagree	12%	635
Disagree	9%	466
Strongly Disagree	3%	177
Don't Know	3%	167
Not Applicable	1%	58
Total		5,383

**It is easy for my child to access additional help with schoolwork.**



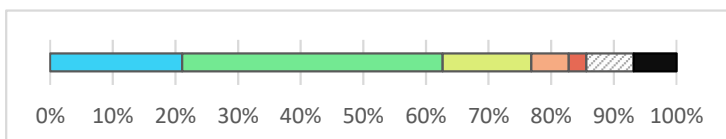
Strongly Agree	22%	1,198
Agree	39%	2,085
Neither Agree nor Disagree	15%	825
Disagree	13%	704
Strongly Disagree	4%	209
Don't Know	5%	249
Not Applicable	2%	87
Total		5,357

**Teachers give me useful information about how to help my child do well in school.**



Strongly Agree	23%	1,251
Agree	38%	2,068
Neither Agree nor Disagree	17%	937
Disagree	13%	692
Strongly Disagree	5%	242
Don't Know	2%	106
Not Applicable	1%	76
Total		5,372

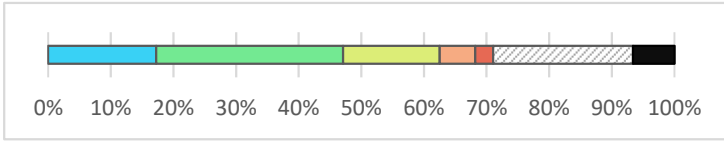
**My child's school provides services that meet my child's physical health needs.**



Strongly Agree	21%	1,128
Agree	42%	2,229
Neither Agree nor Disagree	14%	756
Disagree	6%	322
Strongly Disagree	3%	150
Don't Know	8%	405
Not Applicable	7%	365

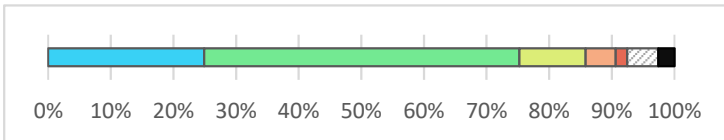
# Parent Climate and Culture Survey 2021: District Results

**My child's school provides resources to connect students and families to the appropriate services they need for mental health.**



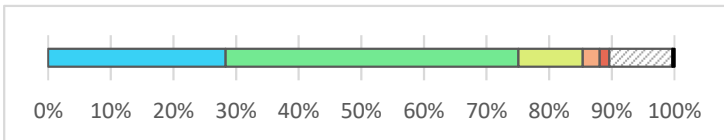
Total		
		5,355
Strongly Agree	17%	925
Agree	30%	1,604
Neither Agree nor Disagree	15%	827
Disagree	6%	305
Strongly Disagree	3%	153
Don't Know	22%	1,199
Not Applicable	7%	356
<b>Total</b>		<b>5,369</b>

**My child's school provides opportunities to participate in school activities.**



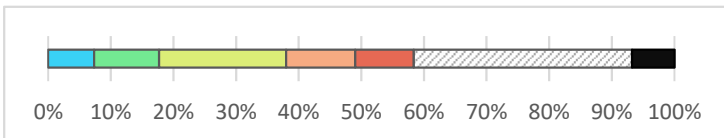
Strongly Agree	25%	1,333
Agree	50%	2,693
Neither Agree nor Disagree	11%	565
Disagree	5%	256
Strongly Disagree	2%	101
Don't Know	5%	264
Not Applicable	3%	138
<b>Total</b>		<b>5,350</b>

**My child's school has a clear definition of respect.**



Strongly Agree	28%	1,521
Agree	47%	2,506
Neither Agree nor Disagree	10%	553
Disagree	3%	143
Strongly Disagree	2%	83
Don't Know	10%	540
Not Applicable	0%	18
<b>Total</b>		<b>5,364</b>

**People have an advantage at VPS due to the color of their skin.**



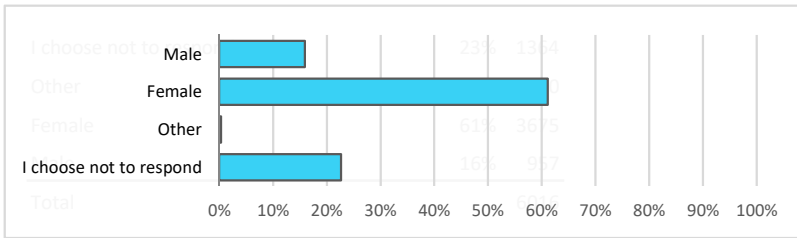
Strongly Agree	7%	391
Agree	10%	556
Neither Agree nor Disagree	20%	1,082
Disagree	11%	590
Strongly Disagree	9%	501
Don't Know	35%	1,860
Not Applicable	7%	362
<b>Total</b>		<b>5,342</b>



# Parent Climate and Culture Survey 2021: District Results

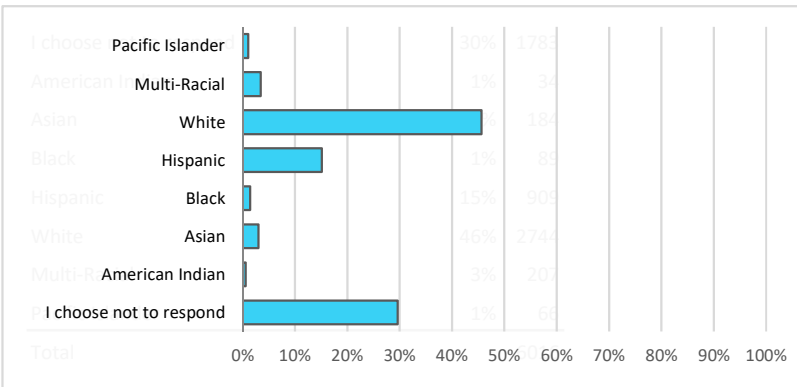
## Demographics

### Gender



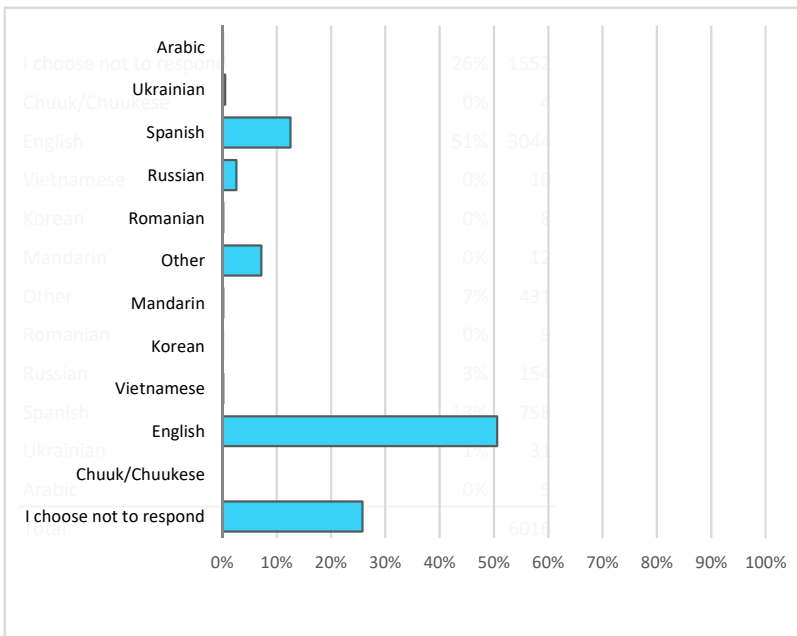
Male	16%	957
Female	61%	3,675
Other	0%	20
I choose not to respond	23%	1,364
<b>Total</b>		<b>6,016</b>

### Race



Pacific Islander	1%	66
Multi-Racial	3%	207
White	46%	2,744
Hispanic	15%	909
Black	1%	89
Asian	3%	184
American Indian	1%	34
I choose not to respond	30%	1,783
<b>Total</b>		<b>6,016</b>

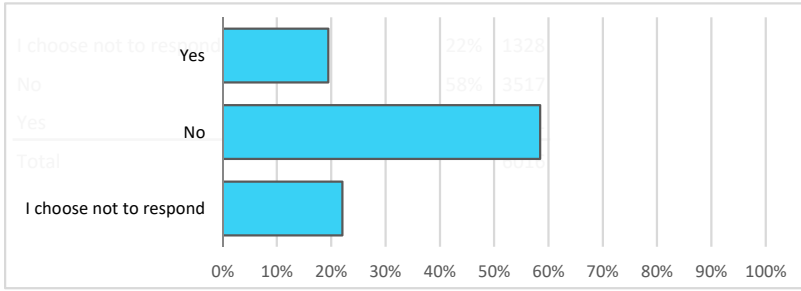
### Home Language



Arabic	0%	5
Ukrainian	1%	31
Spanish	13%	756
Russian	3%	154
Romanian	0%	9
Other	7%	431
Mandarin	0%	12
Korean	0%	8
Vietnamese	0%	10
English	51%	3,044
Chuuk/Chuukese	0%	4
I choose not to respond	26%	1,552
<b>Total</b>		<b>6,016</b>

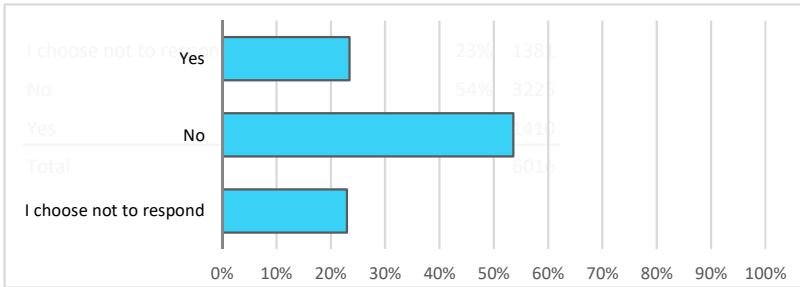
# Parent Climate and Culture Survey 2021: District Results

## English Language Learner



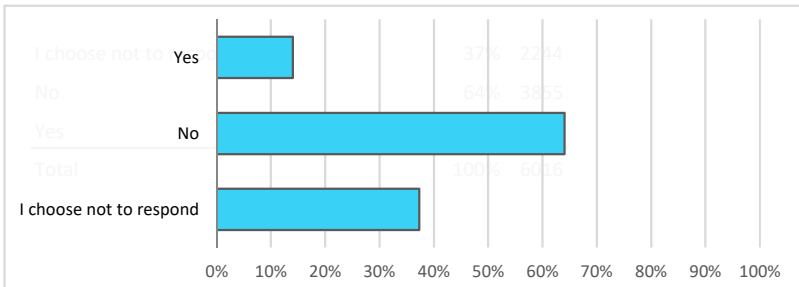
Yes	19%	1,171
No	58%	3,517
I choose not to respond	22%	1,328
<b>Total</b>		<b>6,016</b>

## Free/Reduced Lunch



Yes	23%	1,410
No	54%	3,225
I choose not to respond	23%	1,381
<b>Total</b>		<b>6,016</b>

## Special Education



Yes	14%	846
No	64%	3,855
I choose not to respond	37%	2,244

# Parent Climate and Culture Survey 2021: District Results

## Appendix A: Response Rates by School Building

School	School-Specific Responses*	Enrolled Students**	Rate
Anderson	201	651	31%
Chinook	205	589	35%
Eisenhower	147	445	33%
Felida	267	593	45%
Franklin	144	351	41%
Fruit Valley	33	188	18%
Harney	151	590	26%
Hazel Dell	110	348	32%
Hough	81	251	32%
King	81	443	18%
Lake Shore	125	397	31%
Lincoln	91	358	25%
Marshall	104	289	36%
Minnehaha	106	438	24%
Ogden	115	639	18%
Roosevelt	79	591	13%
Sacajawea	109	374	29%
Salmon Creek	141	398	35%
Truman	89	489	18%
Walnut Grove	141	643	22%
Washington	71	288	25%
Alki	207	696	30%
Discovery	154	645	24%
Gaiser	182	880	21%
Jason Lee	137	655	21%
McLoughlin	179	1,034	17%
Jefferson	214	817	26%
Columbia River	323	1,172	28%
Fort Vancouver	201	1,557	13%
Hudson's Bay	176	1,148	15%
Skyview	412	1,721	24%
LCHS/Flex Acad	15	83	18%
iTech	186	505	37%
VSAA	227	597	38%
Fir Grove/Gate	8	91	9%
Lieser- Open Doors	9	367	2%
Lieser- VHC	28	165	17%
Lieser- VVLA	30	406	7%
School Not Specified	737	0	n/a
<b>Total</b>	<b>6,016</b>	<b>21,892</b>	<b>27%</b>

## Parent Climate and Culture Survey 2021: District Results

*\* Some parents responded for multiple schools.*

*\*\* Some students may have multiple parents completing surveys.*